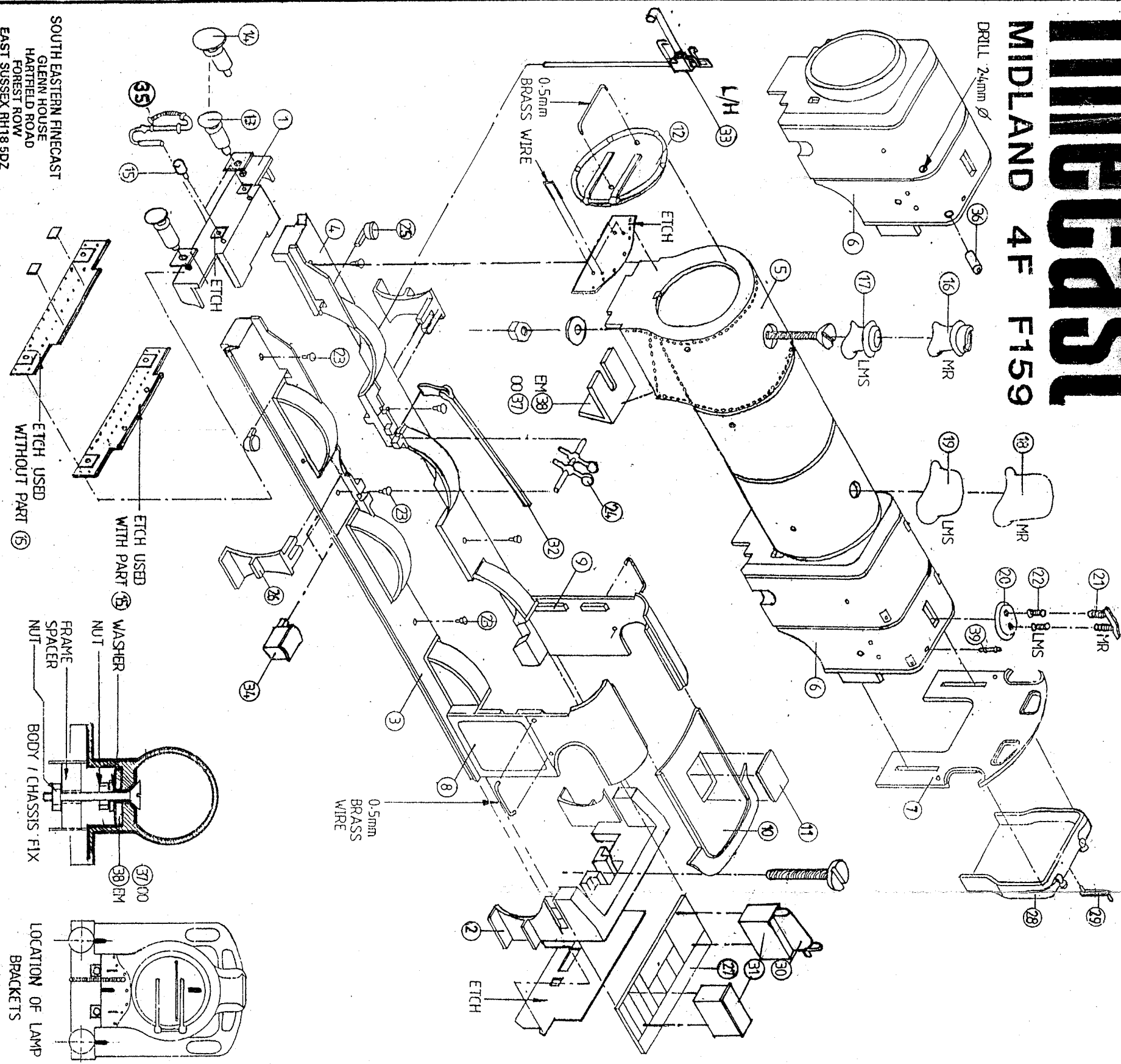


# South Eastern FINECAST MIDLAND 4F F159

**Replacement Parts**  
If any component should arrive faulty or damaged, please return part for replacement FOC.



## HISTORICAL NOTES

The first 197 locomotives of the 4F class were built by the old Midland Railway Co. Several different styles of Midland pattern tenders were used, some new and some from older Midland locomotives. There were those with panel heading around the edge of the sides, some with central vertical bead. These were the second hand types of Johnson design. Both 3250 and 3500 gill versions were used, looking very similar on the outside. The new tenders also varied, with many different features adding to a very complicated subject. The tender supplied with this kit, is representative of those attached to the following groups of locomotive: 3652-3661, 3672-3686, 3687-3901. However this must be taken as a very general rule and the builder should use photos of the particular locomotive being modelled. Other tenders had slightly longer sides with vertical handrails, these are not covered by this model. Alternative coal rails are included and it is suggested that the panel heading could be added using thin strips of thin plastic. If this style is being modelled, tank vents were fitted to some of the early tenders, but not all of them. We therefore recommend that photos of the period being modelled are studied. Many of the old Midland tenders survived into BR ownership.

The Midland locomotives were built to be driven from the right hand side, therefore the kit should be constructed with the reversing rod on the R/H side looking forward from the cab, with the lubricators on the left. Latter LMS engines were built L/H drive although some early ones were the same as the Midland engines. The LMS engines were coupled to the Fowler style of tender. MR locos had the vacuum ejectors on the R/H side. Piston rod tail covers, positioned on the front buffer beam, were removed from various engines as they grew older. Therefore check with dated photographs to establish their presence if particular locomotives are being modelled.

Alternative chimney, dome and safety valves are included, so again check with period photographs, also alternative buffers and mudhole doors.

## ASSEMBLY INSTRUCTION

Check that footplate units (3,4) are straight, by offering up to a steel rule or similar. Fix front buffer-beam (1) and rear drawbeam (2), checking that all is square and parallel. With chassis in place, and wheels aligned with the splashers, fix a 1/2" BSA chestdead screw to rear drawbeam. If necessary, pack between chassis and body so that wheels do not rub on the bottom of the running plates. Remove chassis. Check fit of boiler (5) and firebox (6), also spectacle plate (7), and when satisfied fix into position.

For MR or early LMS locos, washout plugs should be fitted and filed flush. Alternative mudhole doors (36) are provided, drill holes 2.4mm diameter in firebox casing, using existing covers as a guide to position. NOTE: If using motor other than as recommended, it may be necessary to cut holes for clearance in the bottom of the firebox/boiler. Fit cylinder rear (37 for 00) or (38 for EM).

Pass 3/8" BSA screw through bottom of boiler, retain with washer and nut loosely fitted. Replace chassis and tighten screw, using fine tweezers to restrain nut if necessary. Fix screw to inside of boiler. Fit cab sides (8,9), roof (10) and roof vent (11), checking that sides are vertical. Fit cab handrails, using 0.5mm wire.

Fit smokebox door (12) and handrail, using 0.5mm wire and two short handrail knobs. Fit etched cylinder inspection cover, again using 0.5mm wire for handles. Fit etched bufferbeam overlay if required, referring to photographs of prototype. Early locomotives were built with flush rivets, snip rivets being used on latter rebuilds and repairs. Fit choice of buffers (13/14), using etched baseplates. If modelling MR or early LMS, fit tail rods (15) and etched bases, for later years tail rods omitted, and in some cases cover plates fitted. Fit etched rear drawbeam overlay.

Fit choice of chimney (16/17) and dome (18/19), safety valve base (20) and choice of safety valves (21/22). Fit sandbox fillers (23), drilling footplate to suit, weighshaft (24) and by-pass valves (25) if required. Fit front steps (26), checking that they do not foul the coupling rods at front or top. Fit floor (27), backhead (28), regulator (29) and toolboxes/seats (31). Fit reverser (30) and reversing rod (32) (locating upright crank on end of weighshaft).

NOTE: Parts 30, 32, 33 are all on the same (drivers) side, either left or right. Fit handrails, using 0.5mm wire and short handrail knobs at front. Remove a short section of handrail and fit one vacuum ejector (33), drilling smokebox 1.2mm and footplate 0.9mm to accept cast pipes. Some locomotives had a short handrail on the smokebox, just below the ejector. Fit if required, using 0.5mm wire. Fit one or two lubricators (34), on side opposite vacuum ejector. Finally fit vacuum pipe (35) whistle (39) and etched lamp brackets.

## LIST OF COMPONENTS

1	Front Buffer Beam	14	2 x Buffers Small	27	Cab Floor
2	Drawbeam/Rear Footsteps	15	2 x Cylinder Tail Rod Covers	28	Backhead
3	Running Plate Left	16	Tail Chimney MR	29	Regulator Handle
4	Running Plate Right	17	Short Chimney LMS	30	Reverser
5	Boiler/Smokebox	18	Tail Dome MR	31	Left and Right Cab Seats
6	Firebox	19	Short Dome LMS	32	Reversing Rod
7	Spectacle Plate	20	Safety Valve Base	33	Vacuum Ejector
8	Cab Side Left	21	Rambottom Safety Valves	34	2 x Wakefield Lubricators
9	Cab Side Right	22	2 x Ross Pop Safety Valves	35	Vacuum Pipe
10	Cab Roof	23	6 x Sandbox Fillers	36	4 x Mudhole Door Covers
11	Cab Roof Ventilator	24	Weighshaft	37	Cylinder Rear '00'
12	Smokebox Door	25	2 x By-Pass Valves	38	Cylinder Rear 'EM'
13	2 x Buffers Large	26	2 x Front Steps	39	Whistle
				40	Sandboxes

## HARDWARE

1	BBA CH HD 3/4" Screw	2	x BBA Nuts	1	x BBA Washers
4	x Short Handrail Knobs	6	x Medium Handrail Knobs		Handrail Wire

SOUTH EASTERN FINECAST  
GLENN HOUSE  
HARTFIELD ROAD  
FOREST ROW  
EAST SUSSEX RH18 5DZ